

MiSEN on behalf of
“Wexford Missaukee ISD FY26 WAN Connectivity
RFP”
Addendum #1 Dated 2/4/2026

Applicant Name: Michigan Statewide Educational Network (MiSEN) on behalf of
Wexford Missaukee ISD

Title: Wexford Missaukee ISD FY26 WAN Connectivity

BEN: 17007965

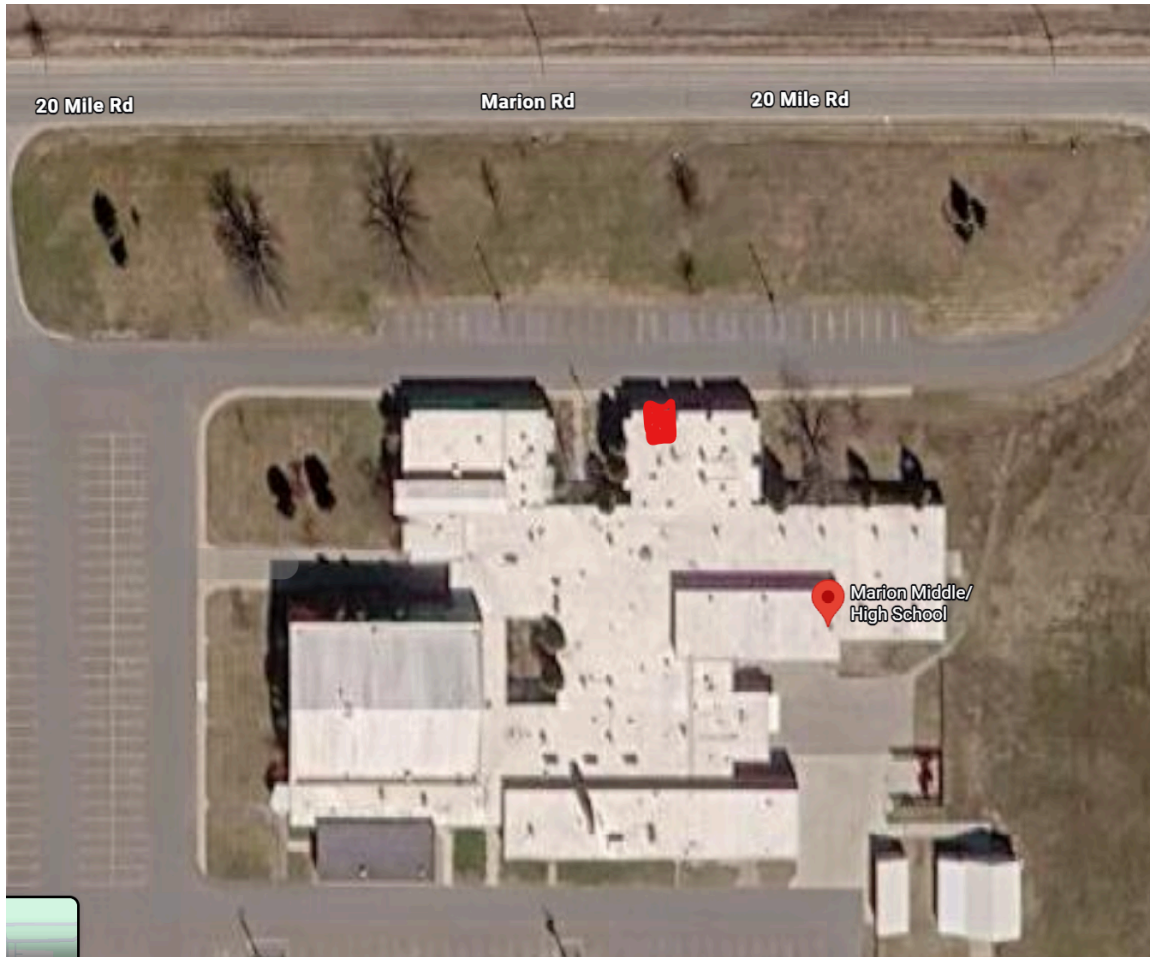
FCC Form 470 #: 260016689, “MiSEN 2026-C1 Wexford Missaukee ISD
Connectivity”

Bid Open Location: Erwin L. Davis Education Center, 2413 West Maple Avenue,
Flint, MI 48507-3493

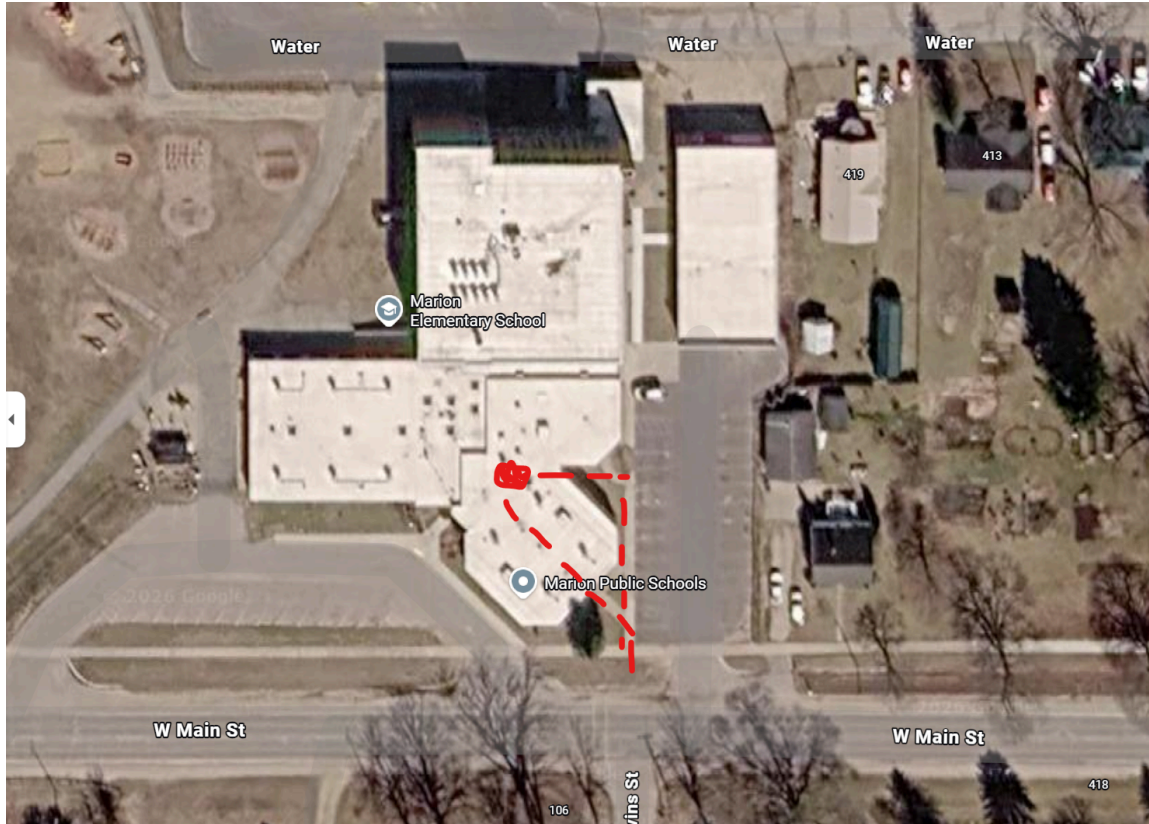
Procurement Contact: info@MiSEN.org

Questions & Answers:

1. Can you post where the existing (or proposed), entrance facility is for Marion Public Schools at 510 Main St., and 2213 20 Mile Road please?
 - a. Proposed Entrance for Marion HS:



b. Marion Elementary



2. The pricing and location spreadsheet only lists the connection between Marion ES and Marion MS/HS for pricing but the RFP pdf on page 79 Section F – Locations, Maps and Connections lists 2 separate connections – Marion ES to Marion MS/HS and McBain Rural Agricultural Schools to Wexford Missaukee ISD – which document is correct?
 - a. A corrected Attachment J has been posted in EPC. The Attachment J posted on the [MiSEN website](#) correctly included all locations.
 - b. [REV Wexford Missaukee FY26 WAN Connectivity Attachment J Pricing and Location Sheet](#)

Clarifications:

Proposed entrance locations for McBain Agricultural School

**MCBAIN RURAL AGRICULTURAL SCHOOL DISTRICT
HIGH SCHOOL WING**

FIRE:
SHELTER:

